



www.foxscientific.com



Floc Testers



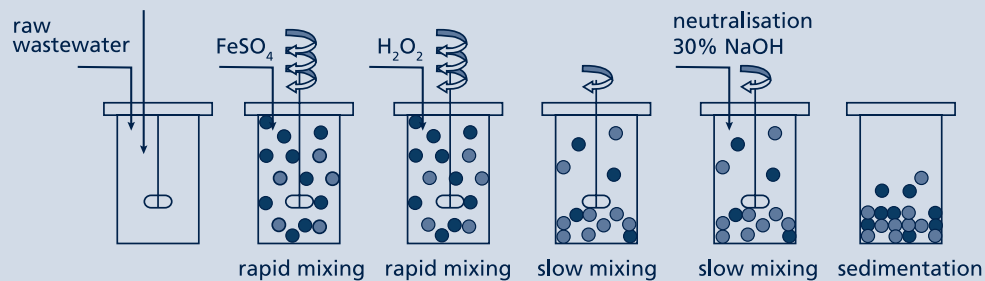
Your Key to Efficient Coagulation and Flocculation Testing

Precise flocculation testing is essential for cost efficient water and wastewater treatment.

Lovibond® Water Testing

OVERVIEW OF FUNCTIONS

The Lovibond® Floc-Tester provides reproducible laboratory simulations of real treatment conditions, enabling operators to define the right coagulant type and dosage before full-scale application. This ensures safe, economical and sustainable water treatment.



Two-step testing

Automatic change of stirring speed within a test

Stage 1: Coagulation – Rapid Mixing

Intense, short-term stirring ensures that the chemicals are distributed immediately and uniformly. Colloidally dissolved particles are destabilized (charge neutralization).

Very small primary flocs (microflocs) are formed.

Stage 2: Flocculation – Slow Mixing

The already destabilized particles gently collide.

They grow into visible, stable flocs.

Excessive mixing would break up the flocs, while insufficient mixing would prevent floc formation.



BENEFITS

Standards Compliance

Allows to perform flocculation testing according to ASTM D2035-19

Glassware Compatibility

Suitable for beakers from 500 mL to 1500 mL (1500mL: ET830 complete, ET840 and ET850 on half of the stirring positions)

Two-Step Testing Mode

Time-controlled, or manual, switch between two preset speeds for reproducible flocculation tests

Optimized Visibility

Models ET840 & ET850 offer a flexible back- or base-lighting. The mobile Floc-Tester ET830 guarantees lighting from above

Built to Last

Corrosion-resistant stainless-steel paddles

Good Readability

Large, illuminated display

Simple & Universal Control

Intuitive, language-independent operating concept

Precision Speed Control

20 to 250 rpm digital adjustment

Smart Timing Options

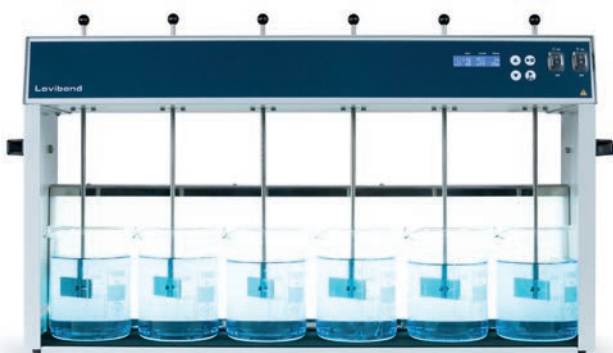
1 to 240 minutes or continuous

Excellent Mobility

Sturdy handles for transport, 12 V DC car adapter (ET830)

Flexible Configurations

Four (ET830 & ET840) or six (ET850) stirring positions with adjustable paddle height



Floc-Tester ET850
Code 2419116



Floc-Tester ET830
Code 2419110



Typical Applications

Wastewater treatment

Simulate flocculation to improve sedimentation and sludge separation to reduce costs

Drinking water treatment

Determine the best coagulant and its dosage to achieve crystal-clear, safe water

Industrial process water

Optimize pretreatment of feeding-, cooling- and process-water for consistent quality

Research & education

Support in the development of new flocculants and laboratory experiments on coagulation and flocculation

ORDERING INFORMATION

Part Number	Code
Floc-Tester ET830 portable with 4 stirring positions	2419110
Floc-Tester ET840 benchtop with 4 stirring positions, back/base illumination	2419113
Floc-Tester ET850 benchtop with 6 stirring positions, back/base illumination	2419116
Beaker glass, 1000 mL	419165
Beaker PP, 1000 mL	419166
Beaker glass, 1500 mL	419867
Transport bag for Floc-Tester ET830	419174



Optimized for mobile use:
Transport bag for Floc-Tester ET830

Tintometer Inc.
Tel: +1 941 756 6410
sales@lovibond.us
U.S.A.

Fox Scientific, Inc.
Tel: 817 783 7500
sales@foxscientific.com
U.S.A.

Technical changes without notice.
Lovibond® and Tintometer® are Trademarks of the Tintometer Group of Companies
Printed in USA 05/26